

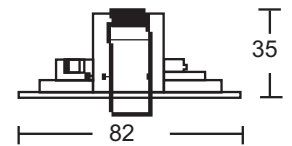
# Recessed Halogen Down Lights

## Halley, Jade & Sadia

A range of recessed down lights for display & decorative applications

### Features / Material / Finish

- Body :** Die cast Zinc alloy or aluminum with choice of color / finish – white and silver.
- Shape :** Fixed round shape with twist lock face.
- Lamp :** Low voltage 12 volt 20 watt / 35 watt / 50 watt lamp with suitable transformer and mains voltage recessed down with 240 volt GU10 50 watt / 35 watt lamp.
- Holder :** Floating 20 cm lead premium quality holders to last long.
- Installation :** Quick and easy installation with spring clips.

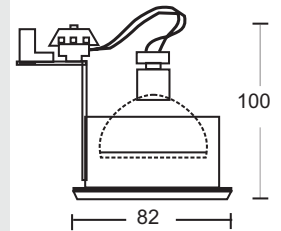
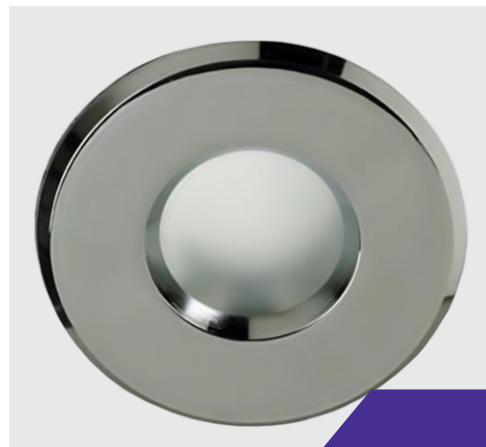


Cutout : 70mm

**Halley**

### Features / Material / Finish

- Body :** Die cast aluminum face and pressed metal frame with choice of color / finish – white and silver.
- Shape :** Fixed round shape with frosted glass diffuser.
- Lamp :** Low voltage 12 volt 20 watt / 35 watt / 50 watt lamp with suitable transformer and mains voltage recessed down light with 240 volt GU10 50 watt / 35 watt lamp.
- Holder :** Floating 20 cm, lead premium quality holders with terminal block to last long.
- Installation :** Quick and easy installation with spring clips.

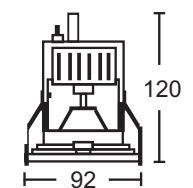


Cutout : 70mm

**Jade**

### Features / Material / Finish

- Body :** Pressed metal aluminum face metal frame with choice of color / finish – white and silver.
- Shape :** Fixed round shape with frosted glass diffuser.
- Lamp :** Low voltage 12 volt 20 watt / 35 watt / 50 watt lamp with suitable transformer & mains voltage recessed down light with 240 volt GU10 50 watt / 35 watt lamp.
- Holder :** Fix 20 cm, lead premium quality holders with terminal block to last long.
- Installation :** Quick and easy installation with spring clips.



Cutout : 75mm

**Sadia**

Glitz Code	Description	Lamp Socket
Halley	Halley Recessed Down light 12 V / 240 V	GU 5.3 / GU 10
Jade	Jade Recessed Down light 12 V / 240 V	GU 5.3 / GU 10
Sadia	Sadia Recessed Down light 12 V / 240 V	GU 5.3 / GU 10